

THE FACTORY

Home of Creative Hackney

A creative
space for all
your needs

The Contents

- [4] The Factory
- [6] Overview
- [8] Pod 4
- [12] Pod 16
- [16] Exhibitions
- [18] Meeting Rooms
- [20] Pop-Up / Markets
- [22] Product Launches
- [24] Photography Space
- [26] The Details
- [28] The Location

The Factory
thefactory.co.uk

21 – 31 Shacklewell Lane,
Dalston, London, E8 2DA

The Factory

The Factory is a unique, multi-purpose venue, set on Shacklewell Lane in Dalston - the beating heart of the creative London Borough of Hackney.

The space features 21 different units (known as Pods). Each one is unique, thanks to the contemporary design elements complementing the original warehouse features. Currently there are a number of independent boutiques and businesses on show, including a French cafe, a beauty salon, tattooing and piercing studios, and the famous Disco Barre studio.

There are currently a range of options for events & hires, public and private. The Pods are fully adaptable - plywood walls (that can be fixed to) and high ceilings allow the most imaginative ideas to come to life. Combine those with large glass walls for displaying, as well as adjustable spotlights for showcasing, and you have a stunning location for any business or activity.



Overview

The Factory is a versatile mixed-use space. Bring any idea to life with its ample capacity and flexibility for your event.

FLOOR PLAN

Pod	Reception Style	Boardroom / Diner	Theatre	Size sq ft	Size sq m
4	60	20	45	355	33
16	52	18	33	335	31



Pod 4

—

This beautiful space next to the cafe features a large, ceiling-height grid window which bathes the room in natural light. Ideal for meetings, workshops and pop-up shops. Photographers, fashion designers and make-up artists will also enjoy the bright room.

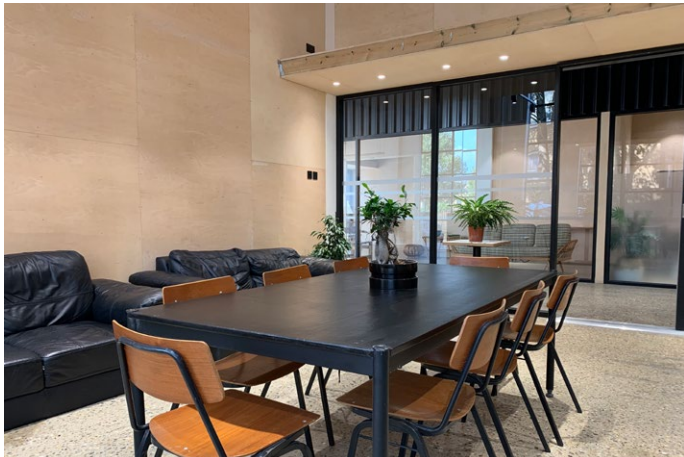
—



Pod 4

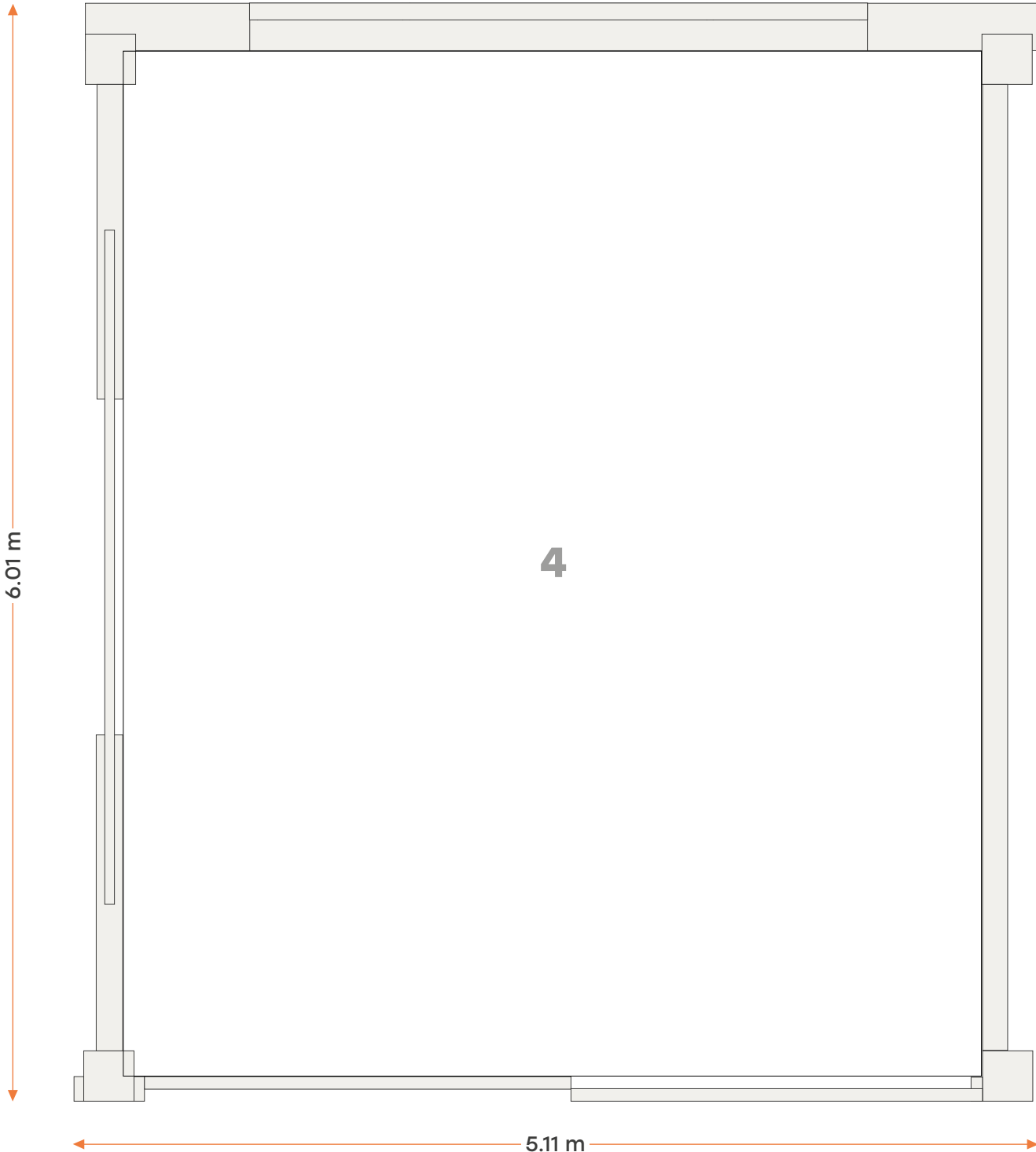
—

The large windows and high ceilings create a fresh, airy atmosphere. The room is available with various furniture options.



CAPACITY CHART

Pod	Reception style	Boardroom / diner	Theatre
4	60	20	45



Pod 16

The most industrial looking space in The Factory. Located in a hidden corner of the venue, that creates an exclusive feel, the room features white exposed brick, concrete pillars, and fully open high ceilings.

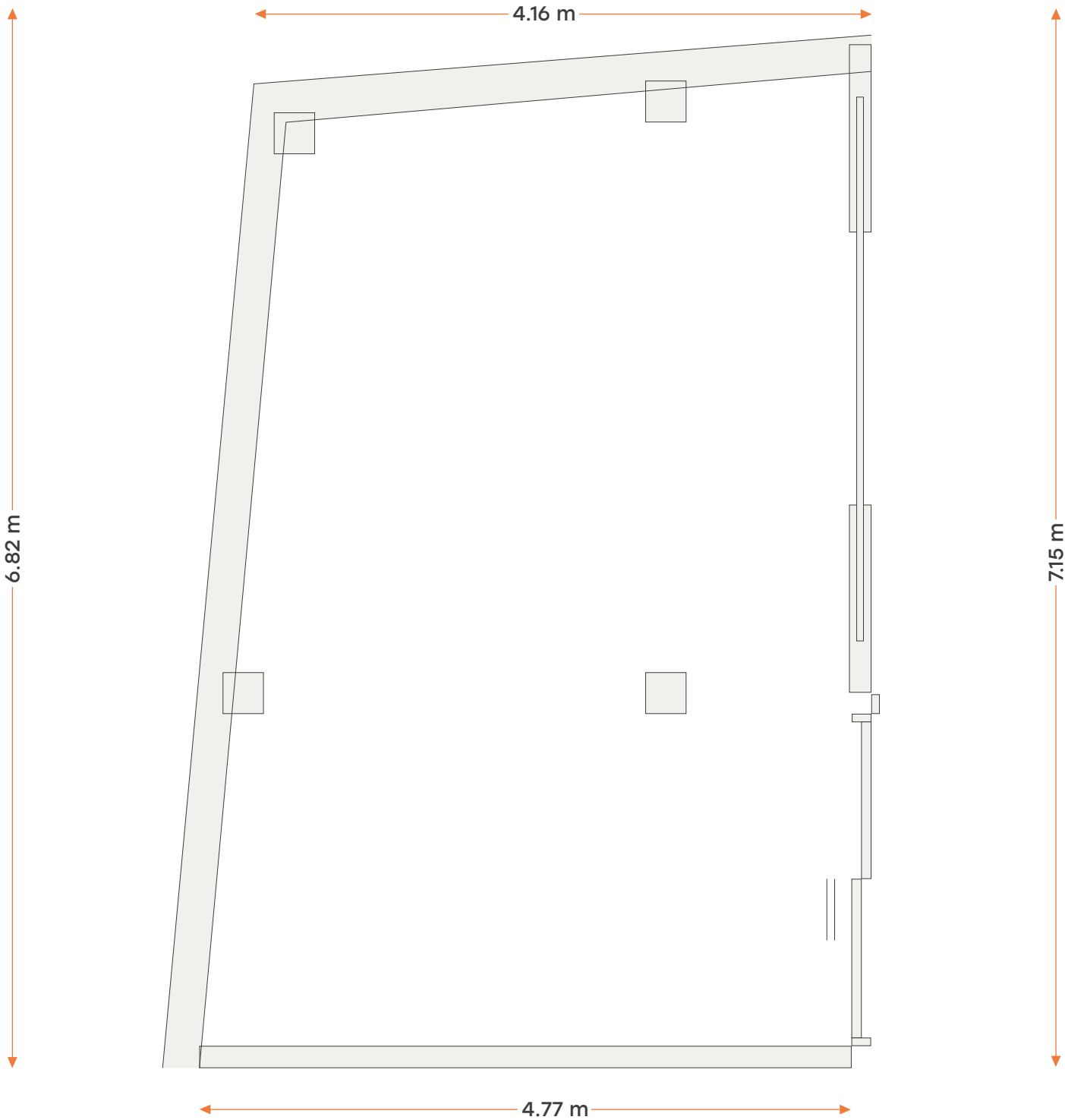


Pod 16

This space is ideal for dry hire photography and video making. Its also a great setting for underground style fashion and art events.



CAPACITY CHART			
Pod	Reception Style	Boardroom / diner	Theatre
16	52	18	33



Exhibitions

Take advantage of the blank canvas plywood walls and the adjustable spotlights. Ample wall space make these pods the ideal space for exhibitions.



Meeting Rooms

—

Enjoy ample natural light and authentic industrial features that create a warm atmosphere for your meetings, presentations and workshops

—



Pop-Up / Markets

Dalston is the epicentre of independent designers, makers and creators. The local population is always on the lookout for cool and interesting new retail events. The Factory offers very flexible terms, from a Saturday market event, to a month long pop-up shop.



Product Launches

Due to its flexibility and adaptability, The Factory is an ideal setting for product launches. Hire as a blank canvas, or with furniture options. External hire of AV equipment and furniture is also available.



Photography Space

The Factory offers the perfect setting for your photography and videography needs. Choose from the exposed white brick walls of Pod 16, or the ample natural light of Pod 4. A professional backdrop is also available for hire.



The Details

—

Whats included?

- High speed WIFI
- Adjustable spotlights
- Programmable RGB lighting to really highlight your event to passing traffic (front pods only)
- All inclusive rates – no added fee for utilities or rates
- Bike Parking Available
- Loading bay available (on request)
- CCTV in the Common Areas
- AV hire options
- Use of in house furniture
- External furniture hire options
- Photography equipment hire options

Terms

- Flexible terms – from one day minimum to a month or longer
- Damage deposit payable (refundable) (only with certain types of hire, please enquire)
- A Temporary Event License may be required from the local authority
- Sound restrictions
(The Factory is in a residential building)

Opening times

7.30am – 9pm weekdays
9am to 9pm weekends

—

For event hire requests and queries, please contact the events team
events@thefactory.co.uk

For our current calendar of events, please visit
www.thefactory.co.uk/events

—

thefactory.co.uk
events@thefactory.co.uk



The Location

You can find us on Shacklewell Lane, right in the heart of vibrant, bustling Dalston. Local train stations are within five minutes walking distance, with an extensive assortment of bus routes, including to Liverpool Street and the West End.

Kingsland Road is less than a minute from our front door, abuzz with every type of business imaginable. This is one of the most vibrant, dynamic areas in east London and The Factory is right in the thick of it.

Buses

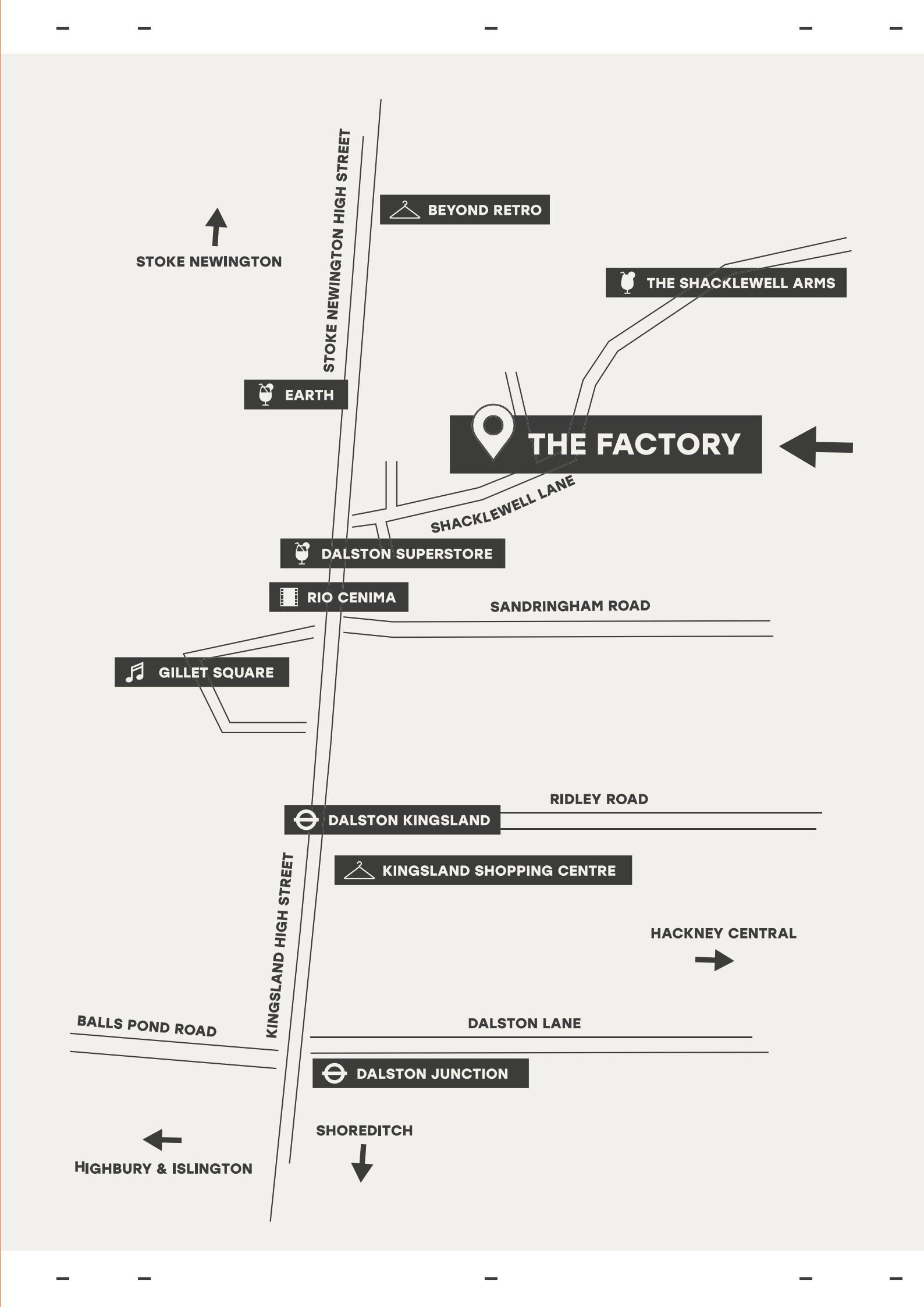
30 • 38 • 242 • 277
67 • 76 • 149 • 243
276 • 488

Trains

Dalston Kingsland Overground
Dalston Juction Overground
Rectory Road

Parking

Pay and display opposite on Shacklewell Lane and Arcola Street. Sheffield stands are available to lock bikes.





—
The Factory
thefactory.co.uk
—

—
info@thefactory.co.uk
@thefactorydalston
—

—
21 – 31 Shacklewell Ln.
Dalston, London, E8 2DA
—

